



GRETCHEN WHITMER
GOVERNOR

STATE OF MICHIGAN
DEPARTMENT OF
ENVIRONMENT, GREAT LAKES, AND ENERGY
LANSING



AARON B. KEATLEY
ACTING DIRECTOR

June 26, 2023

VIA EMAIL

Tyler Rossmassler
503 South Saginaw Street
Flint, Michigan 48502

Dear Tyler Rossmassler:

SUBJECT: Wetland Identification Report
MiEnviro Site Name: 25-Elms Rd and Hill Rd NE-Mundy Twp
MiEnviro WIP Application Submission Numbers: HPT-J8AF-6ER4S

The Department of Environment, Great Lakes, and Energy's (EGLE) Water Resources Division (WRD) conducted a Level 3 Wetland Identification Program (WIP) review of an assessment area consisting of approximately 988 acres on property [Tax ID numbers: 15-06-300-004; 15-06-100-016; 15-06-300-006; 15-06-200-007; 15-06-400-009; 15-06-400-007; 15-06-400-016; 15-06-200-002; 15-06-400-001; 15-05-100-001; 15-05-300-004; 15-05-300-003; 15-05-100-002; 15-05-300-005; 15-05-526-032; 15-05-200-011; 15-05-400-012; 15-05-400-016; 15-06-200-008] located in Town 06N, Range 06E, Sections 5 and 6; Mundy Township (Figure 1) during June 7, 2023. The review was conducted in accordance with Part 303, Wetlands Protection, of the Natural Resources and Environmental Protection Act, 1994 PA 451, as amended (NREPA); and Rule 4(1), Wetland Identification and Assessment (R 281.924), of the Administrative Rules for Part 303. This is a report of our findings in response to your WIP application.

Staff from the WRD reviewed pertinent information such as historical aerial imagery, topographic mapping data, soils survey data, and surface hydrology data. The on-site investigation was conducted with your wetland consultant present and included a review of plants, hydrology, and soils.

Staff confirm, in part, the wetland boundary lines delineated by your consultant. Staff delineated several wetland areas (totaling approximately two acres of regulated wetland) that had been overlooked by your consultant. These included the following: approximately 0.1 acre attached to the northwest end of Wetland S; approximately 0.1 acre joining Wetlands K and E (now combined Wetland E/K); 0.1 acre attached to the northwest end of Wetland E/K; 0.2 acre attached to the west end of Wetland E/K; 0.3 acre attached to the northeast end of Wetland E/K; approximately 0.05 acre joining Wetlands C and D (now combined Wetland C/D); and 1.3 acres attached to the northern end of Wetland C/D. Evidence showed that the areas exhibit wetland hydrology during a typical growing season.

The site maps (Figures 2, 3A, 3B) of the WIP assessment area were created by combining information from your consultant and the WRD. The new maps identify areas containing regulated wetland, unregulated wetland, and non-wetland (upland).

Wetlands: A, C/D, E/K, P, S, T, and U, within the assessment area are regulated by the WRD because of wetland size and/or contiguity to a pond, lake, or stream.

For the areas [approx. 18.4 acres total on site] identified as regulated wetland on the site map (Figure 2), please be advised that any of the following activities require a permit under Part 303:

- a) Deposit or permit the placing of fill material in a regulated wetland.
- b) Dredge, remove, or permit the removal of soil or minerals from regulated wetland.
- c) Construct, operate, or maintain any use or development in a regulated wetland.
- d) Drain surface water from a regulated wetland.

The unregulated wetlands are not regulated by the WRD because they are not contiguous to the Great Lakes, an inland lake or pond, or a river or stream; and are less than 5 acres in size. One unregulated wetland is a stormwater basin that had been created in upland. For those areas identified as non-wetland (upland) on the site maps (Figures 2, 3A, 3B), the WRD lacks jurisdiction under Part 303 for activities occurring there.

This Wetland Identification Report is limited to findings pursuant to Part 303 and does not constitute a determination of jurisdiction under other programs administered by EGLE. Any land use activities undertaken within the assessment area may be subject to regulation pursuant to the NREPA under the following programs:

Part 91, Soil Erosion and Sedimentation Control
Part 301, Inland Lakes and Streams
Floodplain Regulatory Authority found in Part 31, Water Resources Protection

Please be aware that this Wetland Identification Report does not constitute a determination of the jurisdiction under local ordinances or federal law. The United States Army Corps of Engineers (USACE) retains regulatory authority over certain wetlands pursuant to Section 404 of the federal Clean Water Act (CWA), and specifically those wetlands associated with traditionally navigable waters of the state. Navigable waters are generally the Great Lakes, their connecting waters, and river systems and lakes connected to these waters. In other areas of the state, the WRD is responsible for identification of wetland boundaries for purposes of compliance with the CWA under an agreement with the United States Environmental Protection Agency. Your assessment area is unlikely to be within those areas also regulated by the USACE. Additional information may be obtained by contacting the USACE at 313-226-2218.

You may request the WRD reassess the wetland boundaries and regulatory status of wetlands within any portion of the assessment area, should you disagree with the findings, within 60 days of the date of this report. A written request to reassess the Wetland Identification assessment area must be accompanied by supporting evidence with regard to wetland vegetation, soils, or hydrology that are different from, or in addition to, the information relied upon by WRD staff in preparing this report. The request should be submitted to:

Tyler Rossmassler
Page 3
June 26, 2023

Wetland Identification Program
Department of Environment, Great Lakes, and Energy
Water Resources Division
P.O. Box 30458
Lansing, Michigan 48909-7958

Please use the MiEnviro submission number assigned to this project site if submitting a permit application or otherwise corresponding with our office.

The findings contained in this report do not convey, provide, or otherwise imply approval of any governing act, ordinance, or regulation, nor does it waive the obligation to acquire any applicable federal, state, county, or local approvals. This Wetland Identification Report is not a permit for any activity that requires a permit from EGLE.

The findings contained in this report are binding on EGLE until June 26, 2026, a period of three years from the date of this Wetland Identification Report unless a reassessment has been conducted. Please contact me at GyekisK@Michigan.gov; 517-243-5002; or EGLE, P.O. Box 30458, Lansing, Michigan 48909-7958, if you have any questions regarding this report.

Sincerely,



Keto Gyekis
Wetland Identification Program Coordinator
Water Resources Division

Enclosures

cc: Mundy Township Clerk
Genesee County Soil Erosion Enforcement Agent (CEA)
Genesee County Health Department
Kyle Hottinger, ASTI Environmental
Brittney Beavers, EGLE
Katie Blodgett, EGLE
Jeff Pierce, EGLE

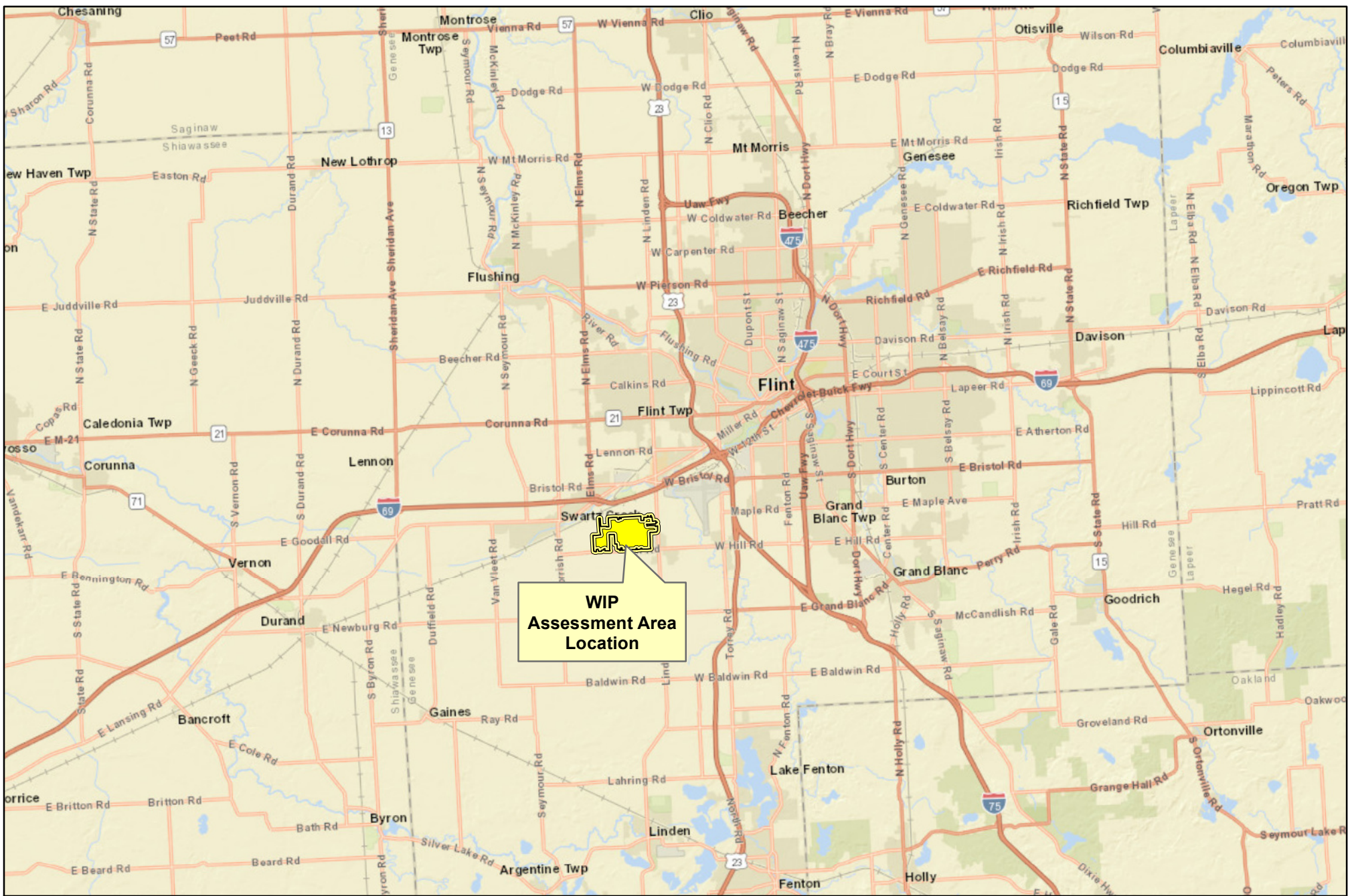
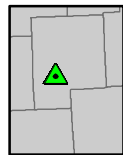
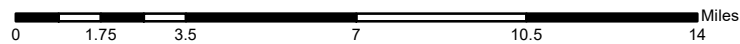


Figure 1.
EGLE Wetland Identification Location
Elms Rd and Hill Rd
Mundy Twp
WIP - HPT-J8AF-6ER4S



Genesee County



MICHIGAN DEPARTMENT OF ENVIRONMENT, GREAT LAKES, AND ENERGY

Map created: June 2023
 K. Gyekis,
 Wetlands, Lakes,
 and Streams Unit, EGLE WRD

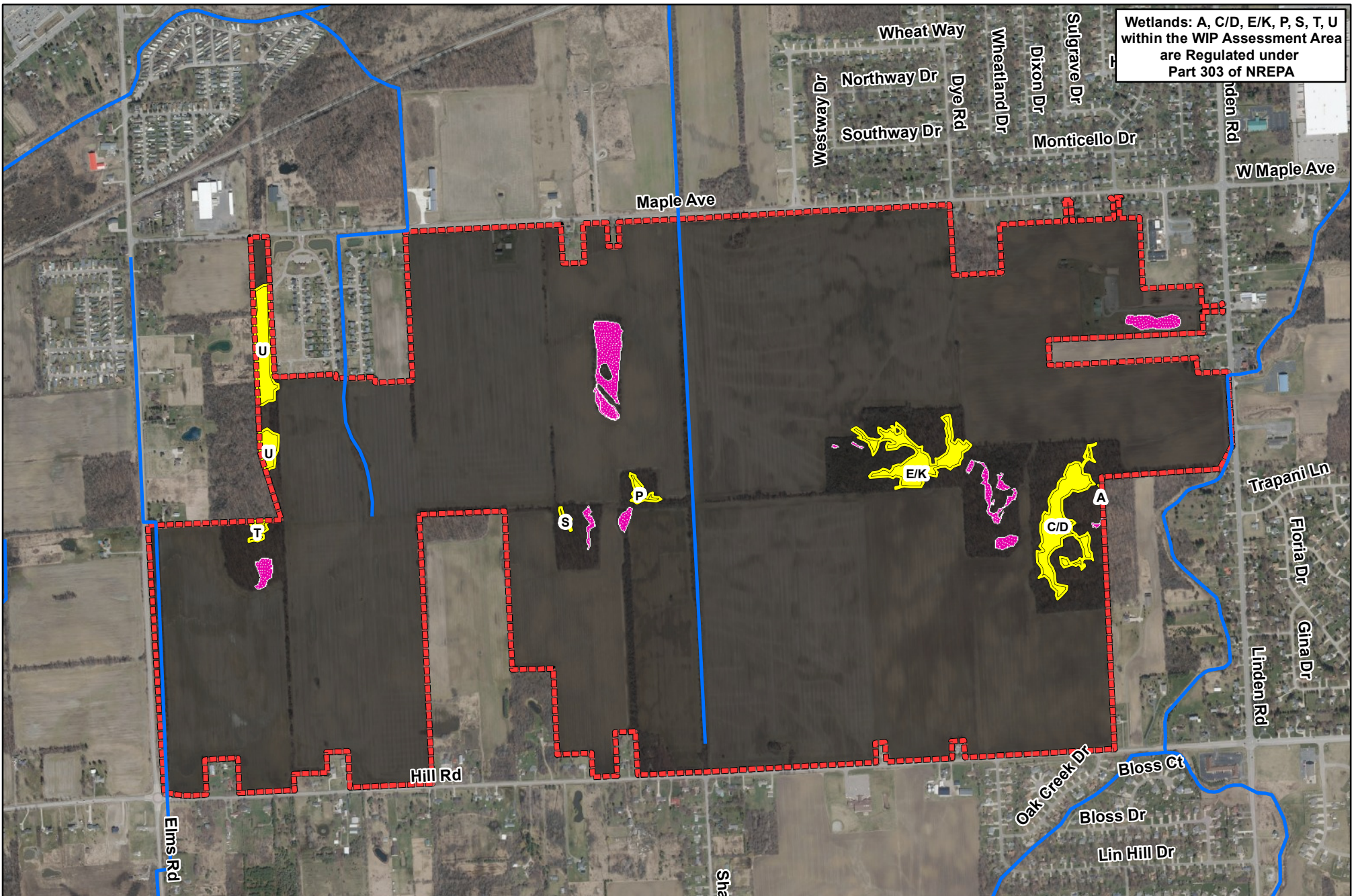
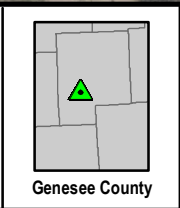


Figure 2.
EGLE Wetland Identification Overview
 Elms Rd and Hill Rd
 Mundy Twp
 WIP - HPT-J8AF-6ER4S



EGLE Regulated Wetland
 EGLE Unregulated Wetland
 Stream / Drain
 WIP Assessment Area

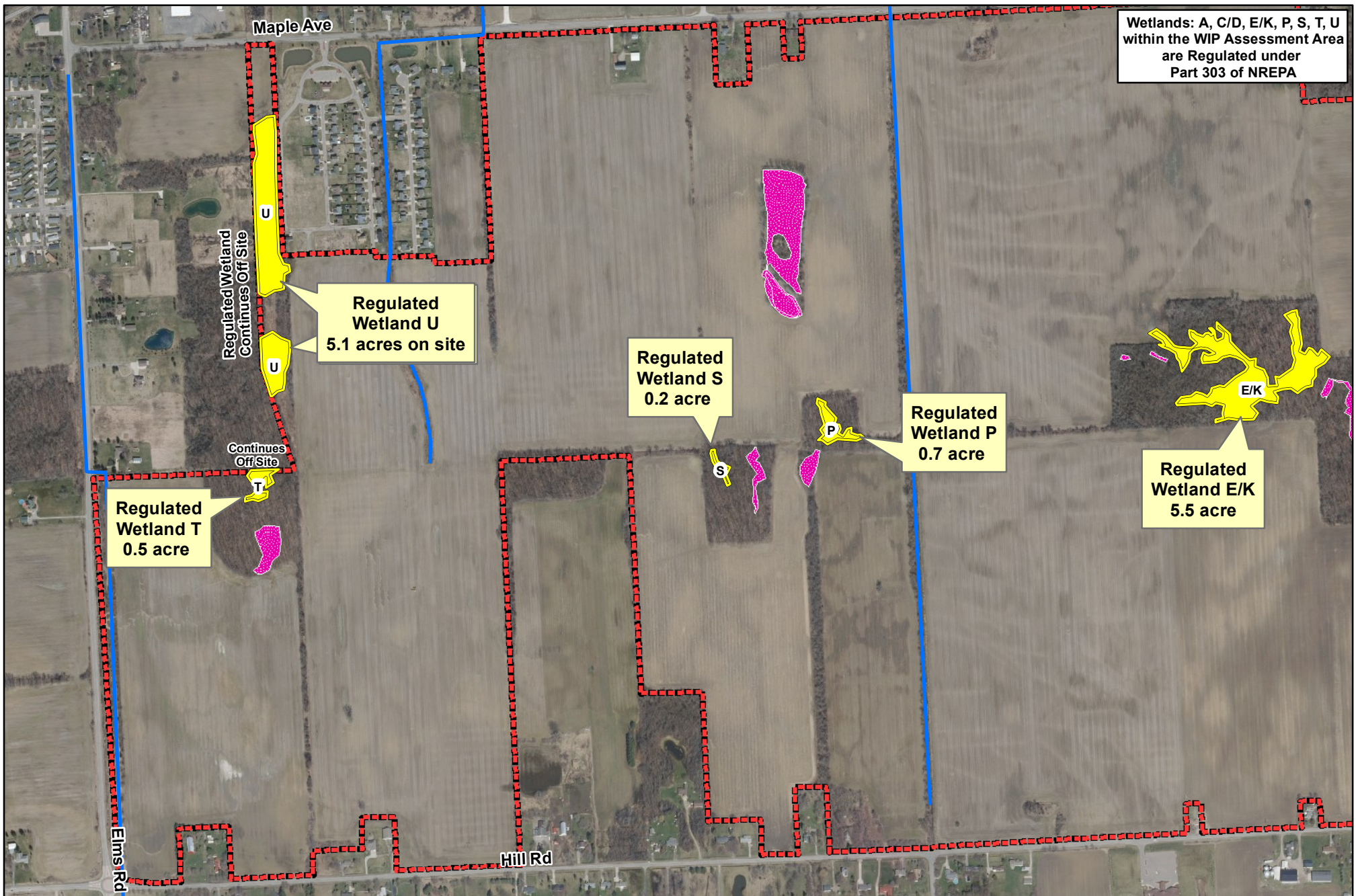
0 250 500 1,000 1,500 2,000 Feet

This drawing showing those areas containing wetland and not containing wetland is an approximation of the boundaries flagged on-site.

This drawing does not authorize or permit activities requiring a permit in accordance with Part 303 of the Natural Resources and Environmental Protection Act, 1994 PA 451, as amended.

EGLE
 MICHIGAN DEPARTMENT OF ENVIRONMENT, GREAT LAKES, AND ENERGY

Map created: June 2023
 K. Gyekis,
 Wetlands, Lakes,
 and Streams Unit, EGLE WRD



Wetlands: A, C/D, E/K, P, S, T, U within the WIP Assessment Area are Regulated under Part 303 of NREPA

Regulated Wetland Continues Off Site

Regulated Wetland U
5.1 acres on site

Regulated Wetland S
0.2 acre

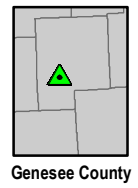
Regulated Wetland P
0.7 acre

Regulated Wetland E/K
5.5 acre

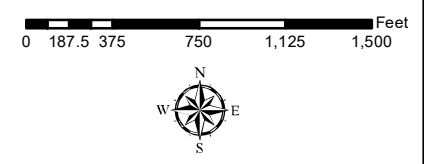
Regulated Wetland T
0.5 acre

Continues Off Site

Figure 3A.
EGLE Wetland Identification Detail
 Elms Rd and Hill Rd
 Mundy Twp
 WIP - HPT-J8AF-6ER4S



- EGLE Regulated Wetland
- EGLE Unregulated Wetland
- Stream / Drain
- WIP Assessment Area

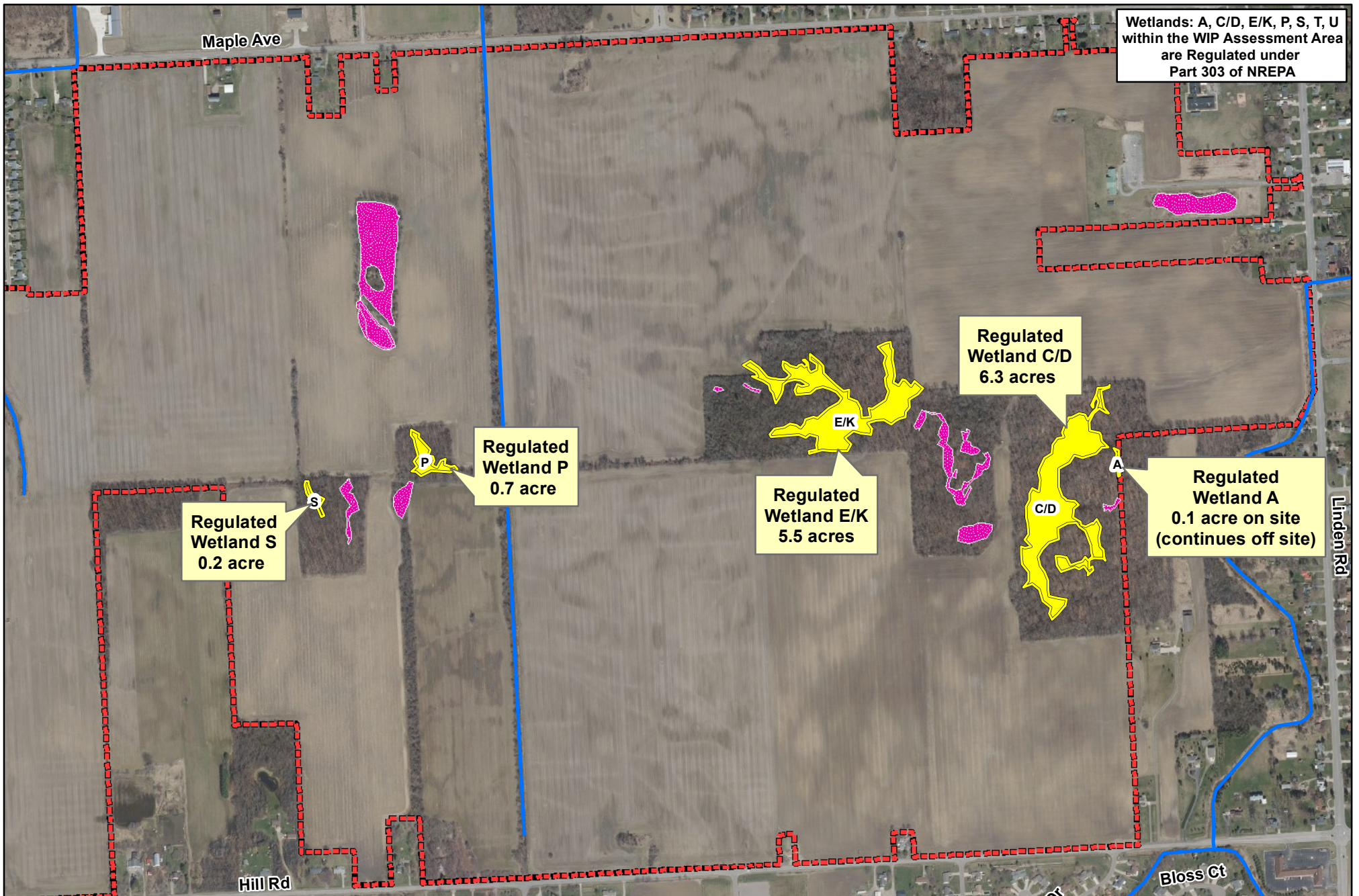


This drawing showing those areas containing wetland and not containing wetland is an approximation of the boundaries flagged on-site.

This drawing does not authorize or permit activities requiring a permit in accordance with Part 303 of the Natural Resources and Environmental Protection Act, 1994 PA 451, as amended.

MICHIGAN DEPARTMENT OF ENVIRONMENT, GREAT LAKES, AND ENERGY

Map created: June 2023
 K. Gyekis,
 Wetlands, Lakes,
 and Streams Unit, EGLE WRD



Wetlands: A, C/D, E/K, P, S, T, U within the WIP Assessment Area are Regulated under Part 303 of NREPA

Regulated Wetland S
0.2 acre

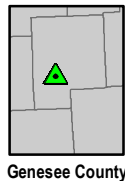
Regulated Wetland P
0.7 acre

Regulated Wetland E/K
5.5 acres

Regulated Wetland C/D
6.3 acres

Regulated Wetland A
0.1 acre on site
(continues off site)

Figure 3B.
EGLE Wetland Identification Detail
Elms Rd and Hill Rd
Mundy Twp
WIP - HPT-J8AF-6ER4S



- EGLE Regulated Wetland
- EGLE Unregulated Wetland
- Stream / Drain
- WIP Assessment Area

0 187.5 375 750 1,125 1,500 Feet



This drawing showing those areas containing wetland and not containing wetland is an approximation of the boundaries flagged on-site.

This drawing does not authorize or permit activities requiring a permit in accordance with Part 303 of the Natural Resources and Environmental Protection Act, 1994 PA 451, as amended.



Map created: June 2023
K. Gyekis,
Wetlands, Lakes,
and Streams Unit, EGLE WRD